



# Champion Change. Improve Lives.

The Jane Bancroft Robinson Foundation (JBRF) strives to advance the health and livelihood of Black women who live East of the Anacostia River in Washington, D.C.



## WHAT WE DO

We believe those with lived experience are best positioned to define challenges and shape solutions that help Black women thrive. JBRF invests in and co-creates community-led solutions to dismantle systemic barriers while advancing racial equity, health, and employment outcomes.

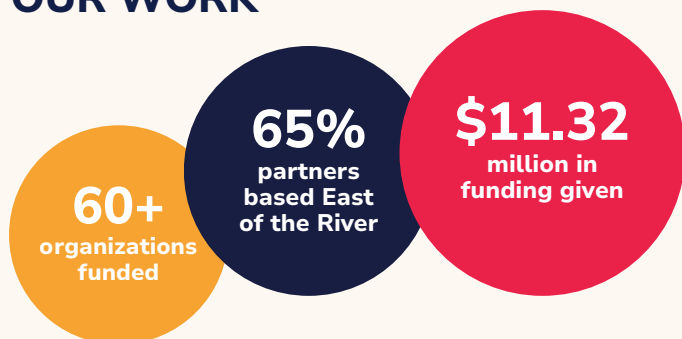
We invest in three areas across Wards 7 and 8:

- 1 Economic mobility
- 2 Cancer navigation
- 3 Nonprofit ecosystem support

## HOW WE WORK

Our approach is grounded in the principles of **equity, trust, and collaboration**. We know real change is possible only when we prioritize community-driven change over traditional philanthropic directives. That is why we bring everyone to the table — residents, nonprofits, health care professionals, and community leaders — to make meaningful improvements across East of the River neighborhoods.

## OUR WORK



## OUR PHILANTHROPIC PORTFOLIOS

### SustainABLE Community Initiatives (SCI)

SCI works closely with residents, organizations, and local leaders across three focus areas: **health and wellness, collaborative relationships, and capacity building and technical assistance**. Our investments strengthen the East of the River community by expanding access to health-related careers, supporting nonprofit leaders, and building a strong nonprofit ecosystem.

### Health Equity and Opportunity (HEO) Initiatives

HEO works to improve the health and economic well-being of Black women East of the Anacostia River by investing in deep partnership with local **organizations, health systems, and city-wide coalitions**. We prioritize reducing cancer mortality and helping Black women advance in an array of health-related careers in hospital and other health care settings, spanning from clinical to support roles.

# Our Bodies of Work

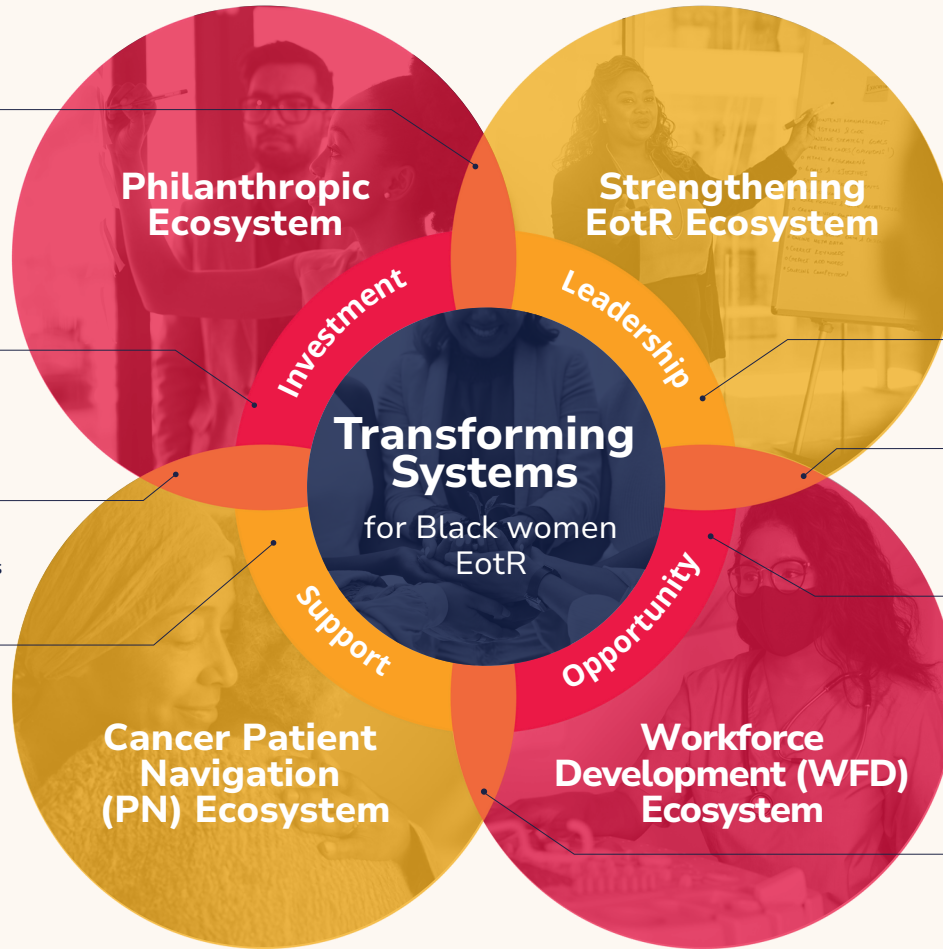
Each strategic area reflects our commitment to meeting the needs of the communities we serve East of the River (EotR) in Washington, D.C.

- ✦ Capacity building and support for Black-led organizations.

- ✦ Collective investment to drive sustainable growth of the field.

- ✦ Scalable patient navigation models.

- ✦ Coordinated programs for cancer-impacted communities.



## KEY PARTNERSHIP

### Black Women Thriving East of the River (BWTEotR)

We work with BWTEotR to ensure women in Wards 7 and 8 EotR have access to abundant opportunities and resources to achieve optimal health and economic prosperity.

## OUR ENGAGEMENTS

A glimpse into our community-centered grants, partnerships, and thought leadership.



### Philanthropic Ecosystem

We collaborate with peer organizations for sector advancement (e.g., *PEAK Grantmaking*, *Grantmakers for Effective Organizations*, *Exponent Philanthropy*, *ABFE*).



### Cancer PN Ecosystem

We strengthen cancer navigation through sustainable financing and thought partnerships (e.g., *DC Cancer Coalition PN and Data Collection Workgroups*).



### Strengthening EotR Ecosystem

We support Black women leaders and aid them in technical assistance (e.g., *strategic planning for United Methodist Church*, *Ward Infinity*, *Chief Executive Leadership Ascend Program*).



### WFD Ecosystem

We leverage partnerships to support health-related careers (e.g., *DC Health Care Workforce Partnership*, *Sibley-Academy of Hope WFD pilot program*, *Cedar Hill Med Ctr.*, *BWTEotR scholarship fund*).

DISCOVER HOW WE ARE MAKING A DIFFERENCE AT [JBRFDC.ORG/GRANTS](https://jbrfdc.org/grants)

Contact us to learn more

📞 (202) 660-6262    🌐 [www.jbrfdc.org](https://www.jbrfdc.org)    ✉ [info@jbrfdc.org](mailto:info@jbrfdc.org)



The Jane Bancroft Robinson Foundation is affiliated with Sibley Memorial Hospital and Johns Hopkins Medicine.